

CX2000

HYDRAULIC CRAWLER CRANE

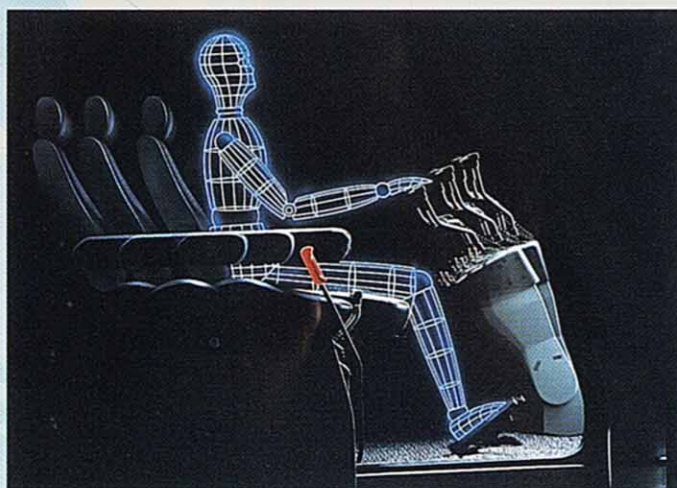
Maximum Rated Load : 200 t at 5.0 m working radius
Basic Boom Length : 18 m
Maximum Boom Length : 90 m
Engine Rated Horsepower : 221 kW (300 PS)
Operating Weight : 190 t



HITACHI

Enhanced Operator Comfort

Adjustable Deluxe Seat and Control Levers
for Pleasant Operation with Less Fatigue



Operator Comfort and Operating Ease

- Electric tilt-type lever stand and adjustable deluxe seat
- Large, curved front glass window for upward/downward visibility
- Short-type lever allowing lever-to-lever spacing adjustment
- Easy-to-read control panel
- Quiet cab thanks to shock-absorbing rubber mounts and well-sealed sliding door
- Emissions control engine

Note: Pictured includes optional equipment: auxiliary jib, self-loading device, catwalk on revolving frame and gangway on boom.

Simplified Transportation and Service

Advanced Designs for Simple Assembly/Disassembly
and Easy Maintenance

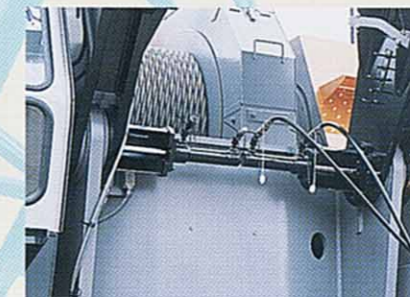


Self-Loading Device (Option)

Using hydraulic jack-up device, the basic machine can be quickly self-loaded onto a trailer.



Side Frame Steps for Easy Access

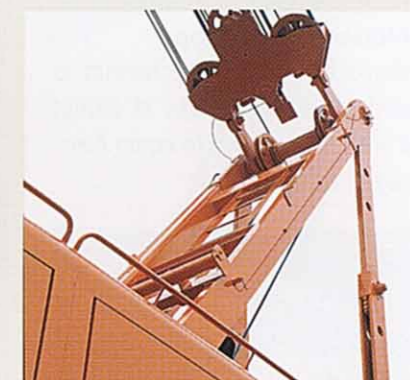


Boom Foot Pin Connecting /Disconnecting Device

Foot pins can easily be aligned and engaged in place with the hydraulic cylinder. With the indicator, the operator can monitor the movement of pins.



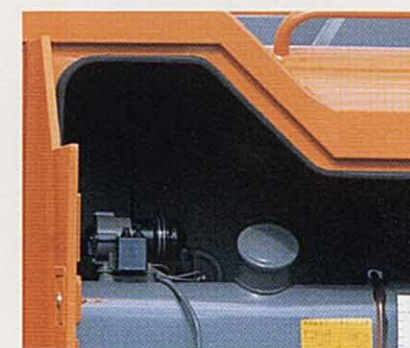
Dual Taper Pin and Retainers



Remote Lubrication System



Wide-Open Door for Easy Maintenance



Electric Refueling Device

Operating Ease

**Precision Crane Operation
with the Drum Rotation Sensing System atop the Lever**



Constant-Speed Swing Control

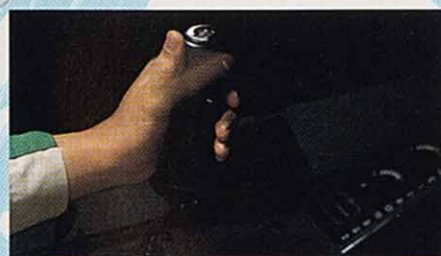
With the dial switch, swing speed can be kept almost constant in a certain range, despite engine speed. In high-lift operation, this feature is advantageous, permitting slow swing while fast hoisting. With the change-over switch, normal swing can be selected.

Independent Slow Speed Control

Independent slow speed control of hoisting (or travel) and boom hoisting is possible. Hoisting and boom hoisting can be separately set to suit job needs. Switching to slow speed control is shock-reduced for smooth operation.

Fine Inching with Drum Rotation Sensing System

Dependable inching operation is ensured even when the load is invisible -- i.e., deep crane operation under the ground with the help of a signal man. The operator can feel drum rotation surge at fingertips. This system, teamed up with the fine-speed control system featuring wide control range, increases controllability and productivity.



Electric Finger-Touch Accelerator Grip

The electric finger-touch accelerator grip, provided atop the swing lever, is added to the conventional accelerator lever and pedals. This Hitachi's original accelerator grip features good throttle response. The operator can choose from the accelerator grip, the accelerator lever and pedals to meet job requirements.



Note : Decal and caution plates, affixed to the machine, vary depending on countries. Pictured are those for the Japanese market.

Safety-First Design

Here Are an Array of Safety Devices: Easy-to-Hold Levers, Rounded Lever Stand, Easy-to-Read Control Panel and Numerous Locking Mechanisms



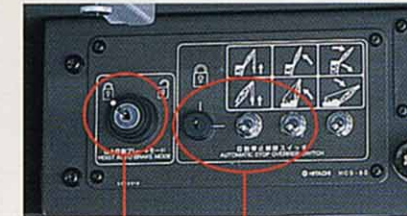
Cushioned Boom Stops

Cushioned boom stop mechanism is provided to reduce shocks at abrupt stops -- auto stops due to boom overhoisting or overloading.



Secondary Boom Overhoist Prevention Device

Even if the boom or hook overhoist prevention device fails, the secondary boom overhoist prevention device automatically works to prevent overhoisting of the boom and hook. It makes the bell and buzzer sound. Also, the engine stops to prevent overhoisting.



① Keyed Auto Brake Mode Release Switch

This switch disables change from the auto brake mode to free fall.

② Keyed Auto Stop Release Switch

The auto stop release switch is fitted with a key to prevent inadvertent release of safety devices.



Pilot-Control Shutoff Lever to Prevent Misoperation When the Operator Gets in and out of the Cab

Fail-Safe Braking System

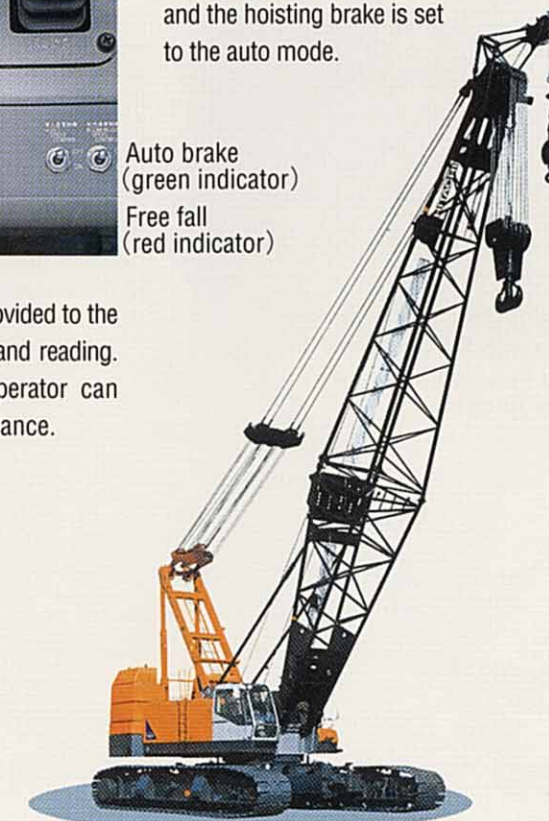
This system does not allow the engine to start unless the swing brake is locked and the hoisting brake is set to the auto mode.



Auto brake
(green indicator)
Free fall
(red indicator)

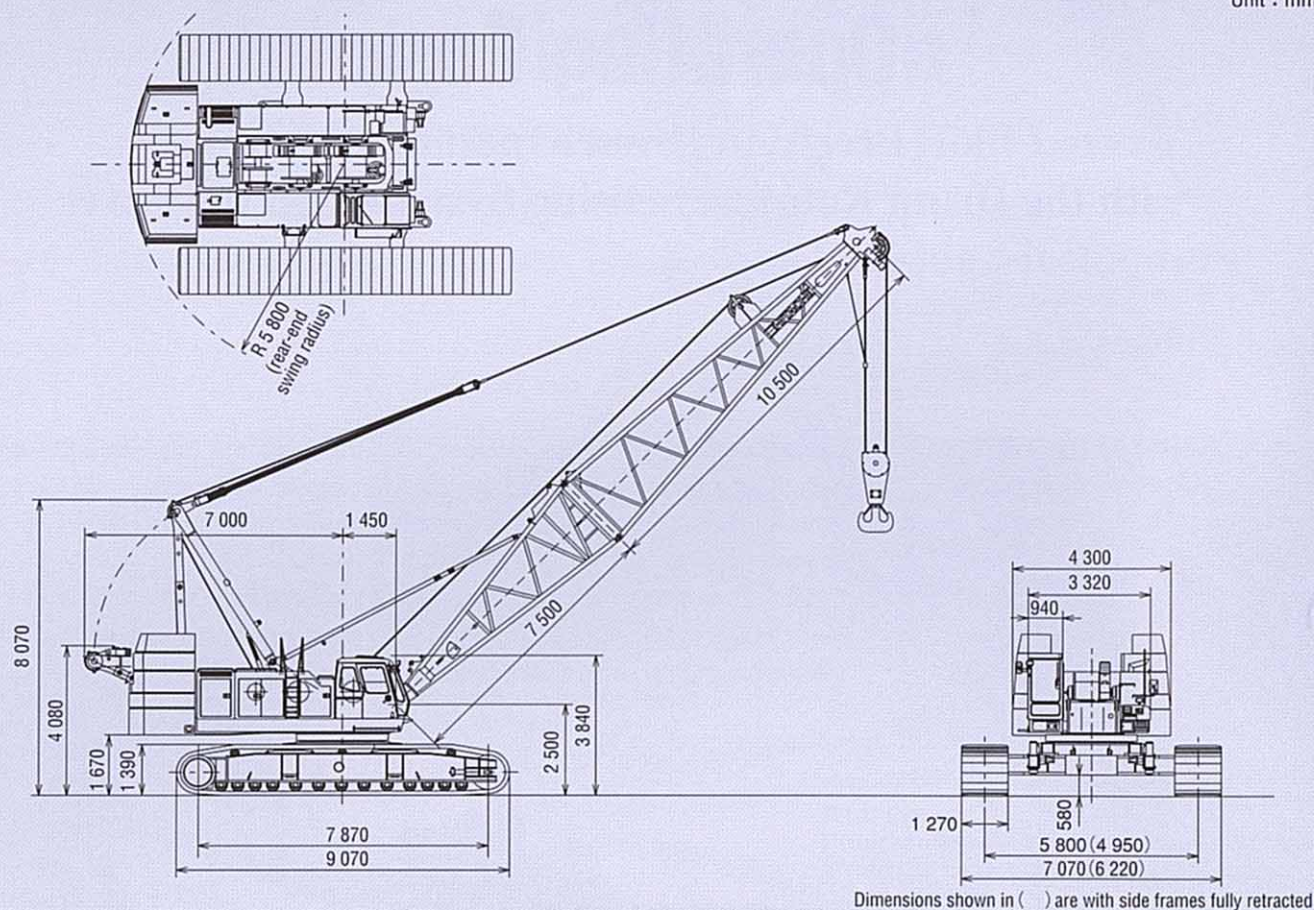
Brake Mode

The brake mode switch is provided to the lever stand for easy control and reading. With the indicators, the operator can read the brake mode at a glance.



Dimensions

Unit : mm



Specifications

(1 t = 1 000 kg)

		CX2000
Maximum rated load x Working radius	t x m	200 x 5.0
Basic boom length	m	18
Max. boom length	m	90
Jib length	m	13 - 37
Maximum boom with jib length	m	72 + 37
Hoist line speeds		
Main hoist *	m/min	110/62/31
Auxiliary hoist *	m/min	110/62/31
Boom hoist (2 drums) *	m/min	27 x 2
Swing speed	min ⁻¹ (rpm)	1.9/1.1 (1.9/1.1)
Travel speed	km/h	1.1/0.7
Gradeability	% (°)	30 (16)
Diesel Engine		Isuzu A-6RBIT
Rated horsepower	kW/min ⁻¹ (PS/rpm)	221/2 000 (300 / 2 000)
Ground pressure	kPa (kgf/cm ²)	93.1 (0.95)
Operating weight	t	190 (Equipped with 18 m boom and 200 ton capacity hook)

Note : Data is expressed in SI units followed by conventional units in ().

* Line speeds will vary with the load.

This catalog is not applicable to European and North America areas.
The machine shown may vary according to territory Specifications.
Specifications are subject to change without notice.

Hitachi Construction Machinery Co., Ltd.

Head Office : Nippon Bldg., 6-2, 2-chome, Ohtemachi
Chiyoda-ku, Tokyo 100-0004, Japan

Telephone : Tokyo (03) 3245-6390

Facsimile : Tokyo (03) 3246-2609