

HITACHI

ELLE system

# SuperEX EX100WD

Rated engine HP

Digging: 57 kW (78 PS)

Traveling: 81 kW (110 PS)

Operating weight: 10 600 kg (23 400 lb)

Bucket capacity

PCSA heaped: 0.19—0.59 m<sup>3</sup>

CECE heaped: 0.17—0.50 m<sup>3</sup>



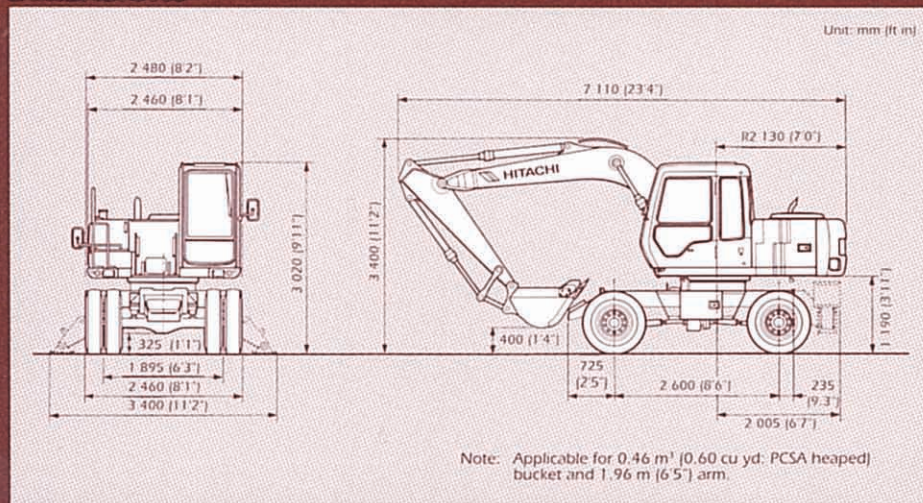
THE BEST OF  
MOBILITY  
AND TECHNOLOGY

- ELLE: Electronic Load-sensing Excavation System. Smooth starts, acceleration/deceleration, and powerful yet smooth travel, with the "human touch" feeling of control.
- Operator comfort: Assured by the Sliding Cockpit, ergonomic Lever Grips; convenient Monitor & Switches and Rubber-Mounted Low Noise & Vibration Cab.

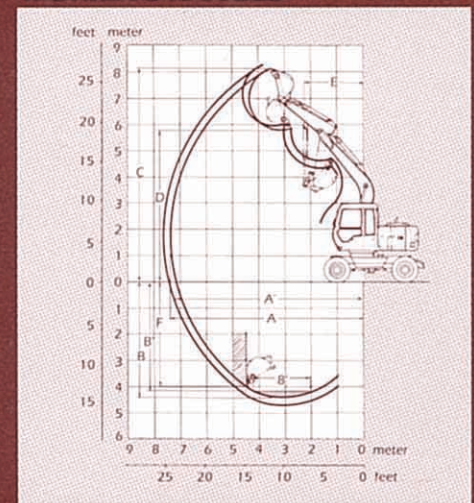


# Amazing Potential... Specifications Tell It All.

## DIMENSIONS



## WORKING RANGES



## SPECIFICATIONS

Model		EX100WD-2	
	kg (lb)	10 600 (23 400)	
	Making/Model	Isuzu 4BD1T	
	DIN rated kW (PS) @ min <sup>-1</sup>	Travel	81 (110) @ 2 500
	SAE rated kW (HP) @ min <sup>-1</sup>	Digging	57 (78) @ 1 800
	liter (US gal, Imp gal)	Travel	81 (109) @ 2 500
	Main pump	Digging	57 (77) @ 1 800
	MPa (kgf/cm <sup>2</sup> , psi)	1 x variable piston	
	Max. l/min (US gpm, Imp gpm)	Travel	1 x 178 (47.0, 39.2)
	min <sup>-1</sup> (rpm)	Digging	1 x 165 (43.6, 36.3)
	Drive system	11.0 (11.0)	
	(A) km/h (mph)	4 wheel drive	
	(B) kN (kgf, lbf)	12.7 - 34.5 (7.9 - 21.4)	
	(C) deg. (%)	60.3 (6 150, 13 600)	
	Arm length m (ft in)	33 (65)	
	(D) kN (kgf, lbf)	1.96 (6'5")	2.26 (7'5")
	(E) kN (kgf, lbf)	57.9 (5 900, 13 000)	53.0 (5 400, 11 900)
	(E) kN (kgf, lbf)	78.5 (8 000, 17 600)	

## STANDARD EQUIPMENT

- Tool kit ● Suspension seat ● Heater ● Auto-tuning radio with digital clock
- Intermittent windshield wiper with window washer ● Cigarette lighter ● Ashtray
- 3 working lights and 1 cab light ● Electric double horn ● Rearview mirror
- Rear tray ● Parcel pocket ● License number-plate lamp

## OPTIONAL EQUIPMENT

- Rear outrigger ● Rear dozer blade (width: 2 470 mm [8'1"], height: 576 mm [1'11"]) ● Fenders for tires ● Air conditioner ● Multi selection lever with rotary valve
- Hose rupture valves ● Electric refilling pump ● Swing motion alarm device with lamps ● Travel motion alarm device ● Additional pump ● Piping kit for extra port
- PTO valve and additional valve with piping kit

## OTHER ATTACHMENT

- Off-set front

## WORKING RANGES

Unit: mm (ft in)

Boom	4.27 m (14'0")	
Arm	1.96 m (6'5")	2.26 m (7'5")
A.	7 430 (24'5")	7 700 (25'3")
A'.	7 210 (23'8")	7 500 (24'7")
B.	4 460 (14'8")	4 760 (15'7")
B'.	4 200 (13'9")	4 530 (14'10")
C.	8 160 (26'9")	8 330 (27'4")
D.	5 770 (18'11")	5 930 (19'5")
E.	2 370 (7'9")	2 400 (7'10")
F.	4 000 (13'1")	4 300 (14'1")

## BACKHOE BUCKETS

Capacity	Recommendation	
	1.96 m (6'5") arm	2.26 m (7'5") arm
PCSA heaped	CECE heaped	
0.19 m <sup>3</sup> [0.25 cu yd]	0.17 m <sup>3</sup>	○
0.30 m <sup>3</sup> [0.39 cu yd]	0.25 m <sup>3</sup>	○
0.40 m <sup>3</sup> [0.52 cu yd]	0.33 m <sup>3</sup>	○
0.46 m <sup>3</sup> [0.60 cu yd]	0.40 m <sup>3</sup>	○
0.55 m <sup>3</sup> [0.72 cu yd]	0.45 m <sup>3</sup>	○
0.59 m <sup>3</sup> [0.77 cu yd]	0.50 m <sup>3</sup>	○
*0.46 m <sup>3</sup> [0.60 cu yd]	0.40 m <sup>3</sup>	○
Clamshell bucket: 0.30 m <sup>3</sup> [0.39 cu yd: CECE heaped], Width 560 mm (22")		○
V-shaped bucket: 0.35 m <sup>3</sup> [0.46 cu yd: CECE heaped]		○
Slope-finishing blade: Width 1 000 mm [39"], Length 1 600 mm [63"]		◇

- Reinforced bucket
- Suitable for materials with density of 2 000 kg/m<sup>3</sup> [3 370 lb/cu yd] or less
- Suitable for materials with density of 1 600 kg/m<sup>3</sup> [2 700 lb/cu yd] or less
- ◇ Slope finishing service — Not recommended

These specifications are subject to change without notice. Illustrations may or may not include optional equipment and accessories, and all standard equipment.

## Hitachi Construction Machinery Co., Ltd.

Head Office: Nippon Bldg., 6-2, 2-chome, Ohtemachi, Chiyoda-ku, Tokyo 100, Japan

Telephone: Tokyo (03) 3245-6377

Facsimile: Tokyo (03) 3246-2609

Telex: J 32539 HITACONJ

Cable Address: "TOKHITACHIKENKI"