

LX450

HITACHI

LX450

W H E E L L O A D E R

Engine Rated Power : 331 kW (450 PS)

Operating Weight : 46 600 kg (102 740 lb)

Bucket Capacity : 5.7 m³ (7.5 yd³)—6.0 m³ (7.8 yd³)



The choice for increasing your productivity

Best Matching

Hitachi has created the best match of performance for increasing your productivity. It is called the Best Matching Control System.



Finger-tip operated shift lever

The operator can drive comfortably using easily changing travel direction or gear range.



Auto/Manual transmission selection switch

With the push of a single switch, the operator can select between manual or automatic transmission operation.

Engine power **331kW**
(450 PS)

Bucket capacity **6.0 m³**
(7.8 yd³)

Breakout force **400 kN**
(40,800 kgf)

Powerful, clean-operating engine

Clean-operating and powerful engine ready to comply with Emission Regulation U.S. EPA Tier 2.

Return-to-carry control

The stop position of the bucket can be optionally set. This helps prevent shock and damage while providing more efficient operation.

Limited slip differential equipped axles

Limited slip differential (L.S.D) equipped axles in both the front and rear boosts traction and straight travel control. It will also help with acceleration and maneuverability on rough terrain.

Restriction valve

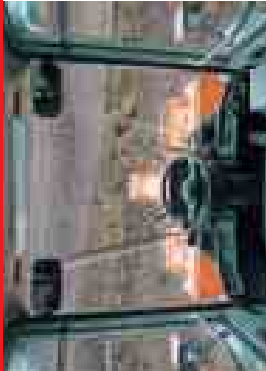
Reduces the shock incurred when stopping the boom, helping to provide smooth operation.



Downshift switch (DSS) ①
Upshift switch (USS) ②

Allows the operator to change gears without using the shift lever. Each press of the downshift switch or upshift switch changes the gear up or down while the operator keeps his hand on the front control lever.





Clear view from cab front

A pillar-less design gives an unobstructed view of the front.



Deluxe suspension seat

The cloth-covered seat offers both comfort and suspension.



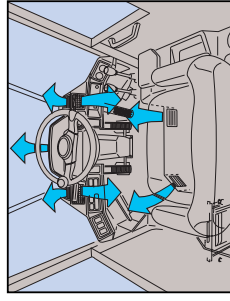
Easy-to-monitor instrument panel

Best Matching Comfort & Safety

For boosting productivity and operator protection.

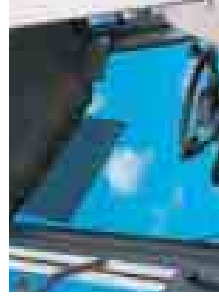
Low-noise design

The cab has been carefully designed to shut out operating noise and vibration, which helps reduce operator fatigue.



External air induction air conditioning (Automobile type)

This powerful air conditioning can be switched between re-circulating air inside the cab or drawing it in from outside.



Sun visor reduces glare

AM/FM radio with automatic station selection

The operator can easily select the desired station using the touch-type LCD panel.

Ride control system (Option)

This system reduces pitching for riding comfort when traveling on rough or snow road.



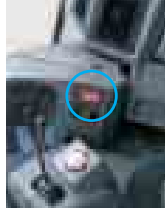
Outer ROPS/FOPS* cab

This rigid cab is ready "just in case" to help protect the operator from falling

objects or during a rollover. The rear-hinged door makes entry and exit easy.

*ROPS: Rollover Protective Structure, Conforms to ISO3471, 1994

*FOPS: Falling-Object Protective Structure, Conforms to ISO3449, 1992 Level II

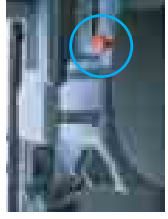


Electronically operated parking brake

A simple press of a button sets and releases the parking brake.

Independent front and rear service brakes

Separate brake lines for the front and rear wheels means that one will be available for braking in the unlikely event that the other fails.



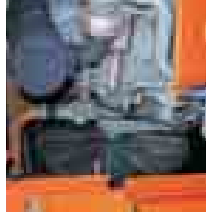
Front control lever lock

Locks the controls to prevent unintentional operation when getting in and out of the cab.



Shift lever lock

Can be easily set to prevent accidental operation of the shift lever.



Fully enclosed engine fan guard

A guard completely encloses the engine fan.

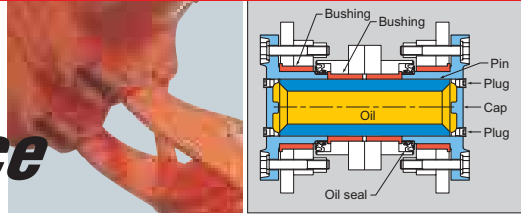
Front boom can be lowered with engine stopped

An accumulator in the hydraulic system for the front boom allows it to be lowered even if the engine has been stopped.



Easy Maintenance

For more care from less effort



Lubricant-sealed pins

Lubricant-sealed pins are equipped at the attachment as standard. There is no need for greasing. Replacement interval of lubrication is 2 000 hours.



Easy-to-check fluid level gauges

These gauges allow the level of the hydraulic and transmission fluids to be checked from ground level with just a glance.

Restricted access

Locks have been added to crucial areas to help ward off unauthorized access or vandalism. The fuel cap and side covers can be locked with the engine key. The following areas can be locked.



- 1 Fuel cap
- 2 Transmission fluid cap
- 3 Hydraulic fluid cap
- 4 Battery box
- 5 Side cover
- 6 Cab door
- 7 Maintenance covers
- 8 Radiator cap

Wide steps

These large steps make entry and exit easy.

Large side cover with damper

The large side cover opens to provide easy access. Items requiring daily maintenance have been centrally located on the left side.

Wide-opening battery cover

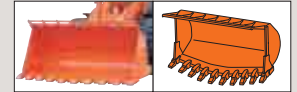
Swings out of the way for fast battery maintenance or replacement.



Note: This photo shows the model with the inspection covers open. Always close these inspection covers before operation.

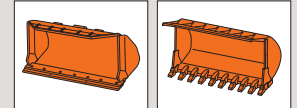


Buckets



Standard spade nose bucket with teeth and bolt on segments

Used for handling blasted rock, sand, dirt and other quarried materials.



General purpose bucket with bolt on cutting edges

Best for stock piling loose dirt and rock.

Rock bucket with teeth and bolt on segments

Used for handling blasted rock, sand, dirt and other quarried materials.

Tires

Lug patterns



L4: Grooves are 1.5 times deeper than L3.

L5: Grooves are 2.5 times deeper than L3.

Note: L3 has standard groove depth.

Rock tire designs and applications

Steel breaker

This is the tire for use where the stones have sharp edges.

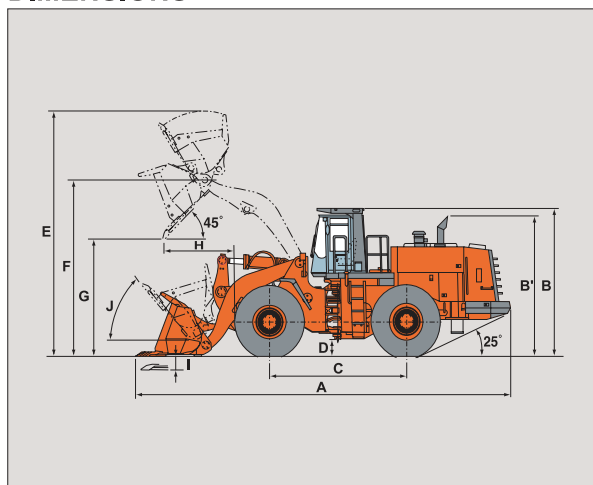
Attachments

High-lift boom

This extended arm gives higher dumping clearance.

DIMENSIONS

Unit : mm (ft in)



	LX450-7
A Overall length	11 250 (36' 11")
B Height to top of cab	4 230 (13' 11")
B' Height to top of exhaust	4 000 (13' 1")
Width over tires	3 700 (12' 2")
C Wheel base	4 100 (13' 5")
D Ground clearance	490 (1' 7")
Tread	2 750 (9' 0")
Bucket width	4 050 (13' 3")
Turning radius (centerline of outside tire)	7 650 (25' 1")
Loader clearance circle, bucket in carry position	8 930 (29' 4")
E Overall operating height	6 985 (22' 11")
F Height to hinge pin, fully raised	5 030 (16' 6")
G Dump clearance 45 degree, full height	3 330 (10' 11")
H Reach, 45 degree dump, full height	2 025 (6' 8")
Reach, 45 degree dump, 7ft (2.13m) clearance	2 730 (9' 0")
I Digging depth (horizontal digging angle)	135 (5")
J Max. roll back at carry position	50 deg.

Note: Data shown is when using 6.0 m³ (7.85 yd³ ISO heaped) spade nose rock bucket with teeth and bolt on segments.

SPECIFICATIONS

		LX450-7
Bucket capacity (ISO heaped) spade nose rock bucket with teeth and bolt on segments	m ³ (yd ³)	6.0 (7.8)
Operating weight	kg (lb)	46 600 (102 740)
Hydraulic Lift Boom Raise/Lower cycle times	s	8.5/4.0
Bucket dump	s	2.3
Max. travel speed Forward/Reverse	km/h (mph)	33.0 (20.5)/34.0 (21.1)
Transmission		4-speed (F/R) full powershift transmission
Max. traction force*	kN (kgf, lbf)	329 (33 500, 73 850)
Breakout force	kN (kgf, lbf)	400 (40 800, 89 960)
Engine Type		Mitsubishi S6A3-Y2TAA1
Rated power (DIN 6271,net)	kW/min ⁻¹ (PS/rpm)	331/2 050 (450/2 050)
Rated power (SAE J1349,net)	kW/min ⁻¹ (hp/rpm)	331/2 050 (444/2 050)
Piston displacement	L (in ³)	18.562 (1 133)
Service brake		Wet disc type
Parking brake		Disc type
Tire size		35/65-33-24PR (L4)
Fuel tank capacity	L (US gal, Imp gal)	680 (179.7, 149.6)

Note: 1 *with 35 / 65-33-24PR (L4) tires.

2 Specifications are based on machine with all standard equipment.

Standard Equipment

Cab

- Outer ROPS/FOPS cab ● Air conditioning
- Seat with mechanical suspension and deluxe cloth covered (with seat belt)
- Tilt steering column ● Intermittent front windshield wiper (with washer)
- Rear windshield wiper (with washer) ● Sun visor ● AM/FM radio
- Cab interior light linked to door ● Floor mat
- Front attachment control lever lock ● Transmission shift lever lock
- Hot-and-cool box ● Rear view mirror

Features

- Electronically controlled automatic transmission ● Downshift switch (DSS)
- Upshift switch (USS) ● Clutch cut-off switch ● Return-to-carry control
- Boom height knockout ● Return to dig control for bucket
- Two-function hydraulic valve with two levers ● Front floating pin
- Limited slip differential (LSD)

Others

- 6.0 m³ (7.8 yd³ ISO heaped) spade nose rock bucket with teeth and bolt on segments
- Backup alarm ● Parking brake with electric switch ● Pre-cleaner
- 35/65-33-24PR (L4) tires

Note: Standard equipment may vary depending on countries, so please consult your Hitachi dealer for details.

Optional Equipment

- General purpose bucket with bolt on cutting edges* ● High-lift boom*
- 5.7 m³ (7.5 yd³ ISO heaped) rock bucket with teeth ● Ride control system
- 35/65-33-24PR (L4) steel breaker tires ● 35/65-33-24PR (L5) steel breaker tires
- 35/65-R33 (L5) tires

* Contact your HITACHI dealer for further information.

Note: Optional equipment may vary depending on countries, so please consult your Hitachi dealer for details.

These specifications are subject to change without notice. Illustrations and photos show the standard models, and may or may not include optional equipment, accessories, and all standard equipment with some differences in color and features.

Hitachi Construction Machinery Co., Ltd.

Head Office: 5-1 Koraku 2-chome, Bunkyo-ku,
Tokyo 112-8563, Japan

Telephone: (03)3830-8050

Facsimile: (03)3830-8202

KL-E083P

02.07 (CD/SP, MT₃)