

LX110

HITACHI

# LX110

W H E E L L O A D E R

Engine Rated Power : 96 kW (130 PS)

Operating Weight : 10 090 kg

Bucket Capacity : 1.9 m<sup>3</sup>— 2.3 m<sup>3</sup>



The choice for increasing productivity

# Ideal Match

Engine power **96 kW**  
(130 PS)

Bucket capacity **2.0 m<sup>3</sup>**  
(2.6 yd<sup>3</sup>)

Breakout force **98 kN**  
(10,000 kgf)

Hitachi has created the ideal performance match to increase productivity. It is called the BMC Matching Control Concept.



Finger-tip operated shift lever

The operator can drive with ease needing only a light-touch to change travel direction or gear range.

Powerful, clean-operating engine  
Clean-operating and powerful engine complies with Emission Regulation U.S. EPA Tier 2.







### Clear view from cab front

A pillar-less design gives an unobstructed view of the front.



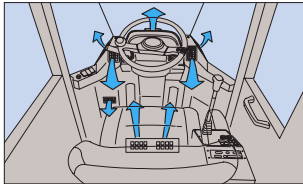
### Easy-to-monitor instrument panel

# Deal Match for Comfort & Safety

For boosting productivity and operator protection.



### Switches are easy to view and reach



### External air induction air conditioning (Automobile type)

This powerful air conditioning can be switched between re-circulating air inside the cab or drawing it in from outside.



### Downshift switch (DSS)

Allows the operator to shift down during scooping and digging operations without using the shift lever.



### Deluxe suspension seat

The comfortable cloth-covered seat offers both suspension and reclining adjustment.

### Axle with torque proportioning differential

Helps to reduce wheel spinning when operating on rough terrain.



### Sun visor reduces glare



### ROPS/FOPS\* cab

This rigid cab is ready "just in case" to help protect the operator from falling objects or during a rollover. The rear-hinged door makes entry and exit easy.

\*ROPS: Rollover Protective Structure. Conforms to ISO3471, 1994

\*FOPS: Falling-Object Protective Structure. Conforms to ISO3449, 1992 Level II



### Front control lever lock

Locks the controls to prevent unintentional operation when getting in and out of the cab.



### Shift lever lock

Can be easily set to prevent accidental operation of the shift lever.



### Electronically operated parking brake

A simple press of a button sets and releases the parking brake.

### Independent front and rear service brakes

Separate brake lines for the front and rear wheels means that one will be available for braking in the unlikely event that the other fails.



### Fully enclosed engine fan guard

A guard completely encloses the engine fan.

### Low-noise design

The cab has been carefully designed to shut out operating noise and vibration, which helps reduce operator fatigue.

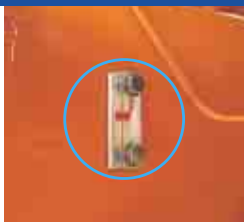
### AM/FM radio with automatic station selection

The operator can easily select the desired station using the touch-type LCD panel.

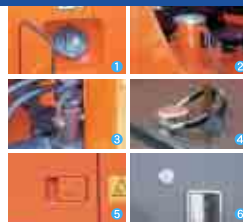




**Convenient lubrication**  
The bucket cylinder bottom pin and other points can be easily lubricated from the ground.



**Easy-to-check fluid level gauge**  
This gauge allows the level of the hydraulic and transmission fluids to be checked from ground level with just a glance.



**Restricted access**  
Locks have been added to crucial areas to help ward off unauthorized access or vandalism. The fuel cap and side cover can be locked with the engine key. The following areas can be locked.

- ① Fuel cap    ② Hydraulic fluid cap
- ③ Transmission fluid cap    ④ Battery box
- ⑤ Side cover    ⑥ Cab door

# Easy Maintenance

Prime condition with minimum effort.

**Large side cover**  
The large side cover opens to provide easy access. Items requiring daily maintenance have been centrally located on the left side.



**Wide steps**  
These large steps make entry and exit easy.

**Wide-opening battery cover**  
Swings out of the way for fast battery maintenance or replacement.

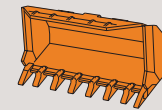
*Note: This photo shows the model with the inspection covers open. Always close these inspection covers before operation.*

## Wide Range of Attachments

### Buckets



**Standard general purpose bucket with bolt on cutting edges**  
Best for stock piling loose dirt and rock.



**General purpose bucket with bolt on teeth**  
A good choice for relatively dense material, such as dense dirt, gravel or dirt with clumps and rocks.

*Note: Refer to Specification Catalog for details.*

### Tires

#### Tread patterns



**L3:**  
Standard groove depth.



**L4:**  
Grooves are 1.5 times deeper than L3.



**L5:**  
Grooves are 2.5 times deeper than L3.

#### Rock tire designs and applications

- **Nylon breaker**  
Perfect for hard surfaces and standard road applications.
- **Steel breaker**  
This is the tire for use where the stones have sharp edges.
- **Side steel breaker**  
The choice for harsh conditions where stones have sharp edges.

### Attachments & Options



**Lumber forks**  
Helps handle square beams, lumber or other such material. Fork width can be manually adjusted to the width of the load.

**High-lift arm (Special option)**  
This extended arm gives higher dumping clearance.



**Log grapple**  
This dedicated attachment allows the loader to handle logs and other round materials.

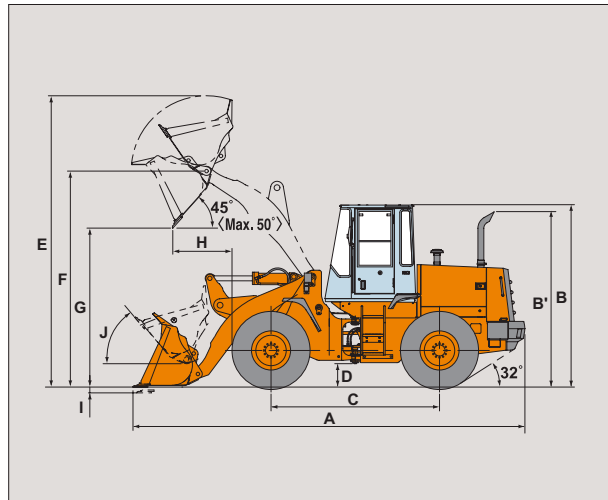


**Quick coupler : Hydraulic type (For quick attachment changing)**  
Allows attachments to be mounted or removed by controls in the cab.





## DIMENSIONS



Unit : mm

	LX110-7
A Overall length	6 750
B Height to top of cab	3 140
B' Height to top of exhaust	3 050
Width over tires	2 410
C Wheelbase	2 900
D Ground clearance	400
Tread width	1 960
Bucket width	2 480
Turning radius (centerline of outside tire)	4 990
Loader clearance circle, bucket in carry position	5 720
E Overall operating height	5 015
F Height to hinge pin, fully raised	3 715
G Dumping clearance 45 degree, full height	2 760
H Reach, 45 degree dump, full height	1 070
Reach, 45 degree dump, 7ft (2.13m) clearance	1 535
I Digging depth (horizontal digging angle)	100
J Max. roll back at carry position	50 deg.

Note: General purpose bucket with bolt on cutting edges.

## SPECIFICATIONS

		LX110-7
Bucket capacity (ISO heaped) with bolt on cutting edges	m <sup>3</sup>	2.0
Operating weight	kg	10 090
Hydraulic Lift arm Raise/Lower cycle times	s	5.9 / 3.0
Bucket dump	s	1.4
Max. travel speed Forward/Reverse	km/h	34.5 / 35.0
Transmission		4-speed (F/R) full powershift transmission
Breakout force	kN (kgf)	98 (10 000)
Engine Type		ISUZU BB-6BG1T
Rated power (DIN 6271,net)	kW/min <sup>-1</sup> (PS/rpm)	96 / 2 200 (130 / 2 200)
Rated power (SAE J1349,net)	kW/min <sup>-1</sup> (HP/rpm)	96 / 2 200 (128 / 2 200)
Piston displacement	L	6.494
Service brake		Wet disc type
Parking brake		Wet disc type
Tire size		17.5-25-12PR (L3)
Fuel tank capacity	L	170

Note: Specifications are based on machine with all standard equipment.

### Standard Equipment

#### Cab

- ROPS/FOPS cab
- Seat with mechanical suspension and deluxe cloth covering (with seat belt)
- Intermittent front windshield wiper (with washer) ●Safety glass
- Rear windshield wiper (with washer) ●Sun visor ●AM/FM stereo radio
- Interior lighting ●Front control lever lock ●Front-side defroster
- Shift lever lock

#### Features

- Power shift transmission (Manual shift)
- Front/rear torque proportioning differential ●Downshift switch (DSS)
- Clutch cut-off switch ●Automatic bucket return-to-dig control
- Two-function hydraulic valve with joystick control

#### Others

- 2.0 m<sup>3</sup> general purpose bucket with bolt on cutting edges
- Parking brake with electric switch ●Reverse warning alarm
- 17.5-25-12PR (L3) tires

Note: Standard equipment may vary depending on countries, so please consult your Hitachi dealer for details.

### Optional Equipment

- 1.9m<sup>3</sup> general purpose bucket with bolt on teeth
- 2.3m<sup>3</sup> light material handling bucket with bolt on cutting edges
- High-lift arm\* ●Quick coupler: Hyd. type ●Lumber forks
- Log grapple ●Air conditioning ●Ride control system

Notes: \*Indicated special option.

: Optional equipment may vary depending on countries, so please consult your Hitachi dealer for details.

These specifications are subject to change without notice. Illustrations and photos show the standard models, and may or may not include optional equipment, accessories, and all standard equipment with some differences in color and features. Before use, go through Operator's Manual for proper operation.

## Hitachi Construction Machinery Co., Ltd.

Head Office: 5-1 Koraku 2-chome, Bunkyo-ku,  
Tokyo 112-8563, Japan

Telephone: (03)3830-8050

Facsimile: (03)3830-8204

KL-E114

03.10 (CD/KA, GT<sub>3</sub>)